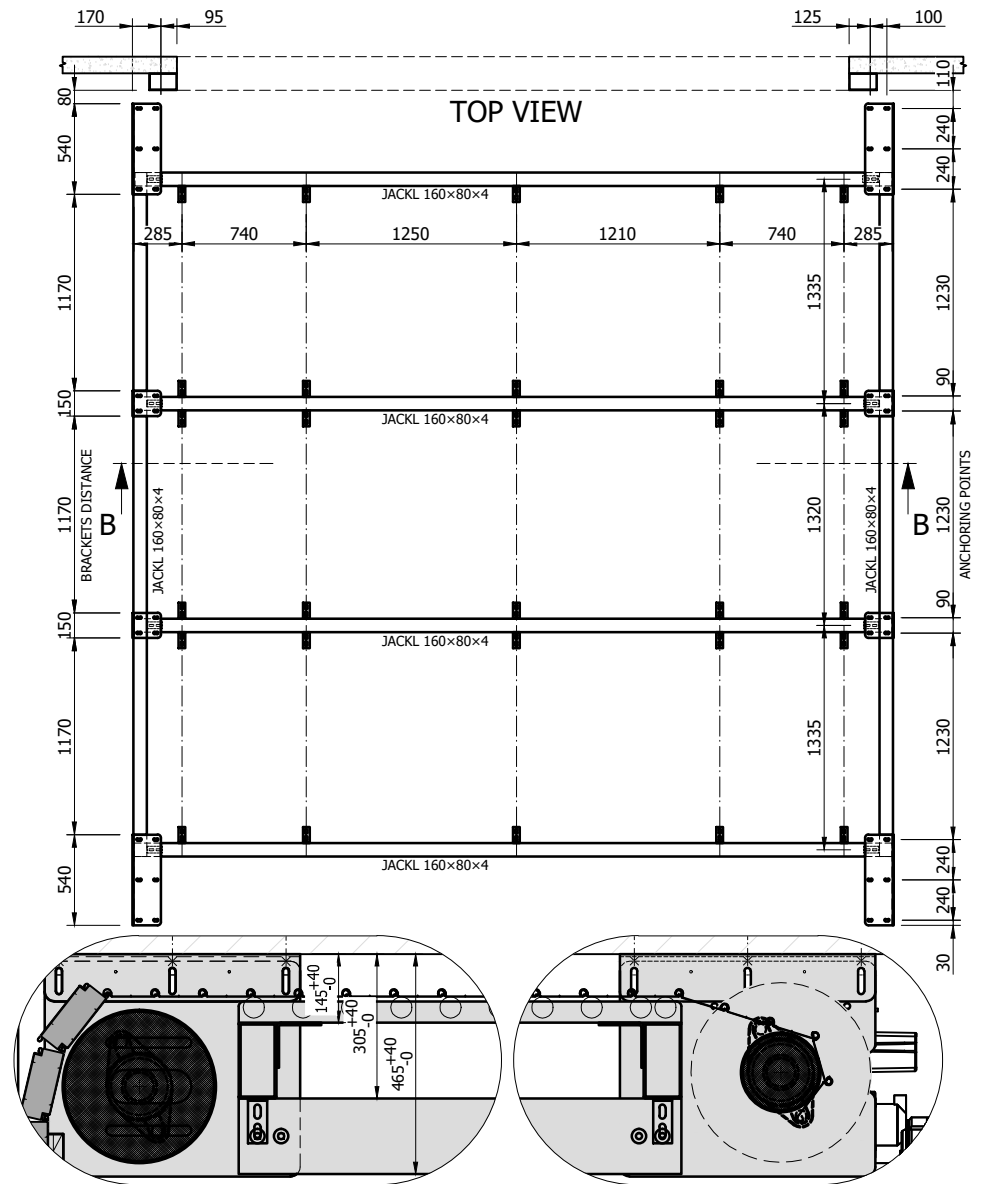
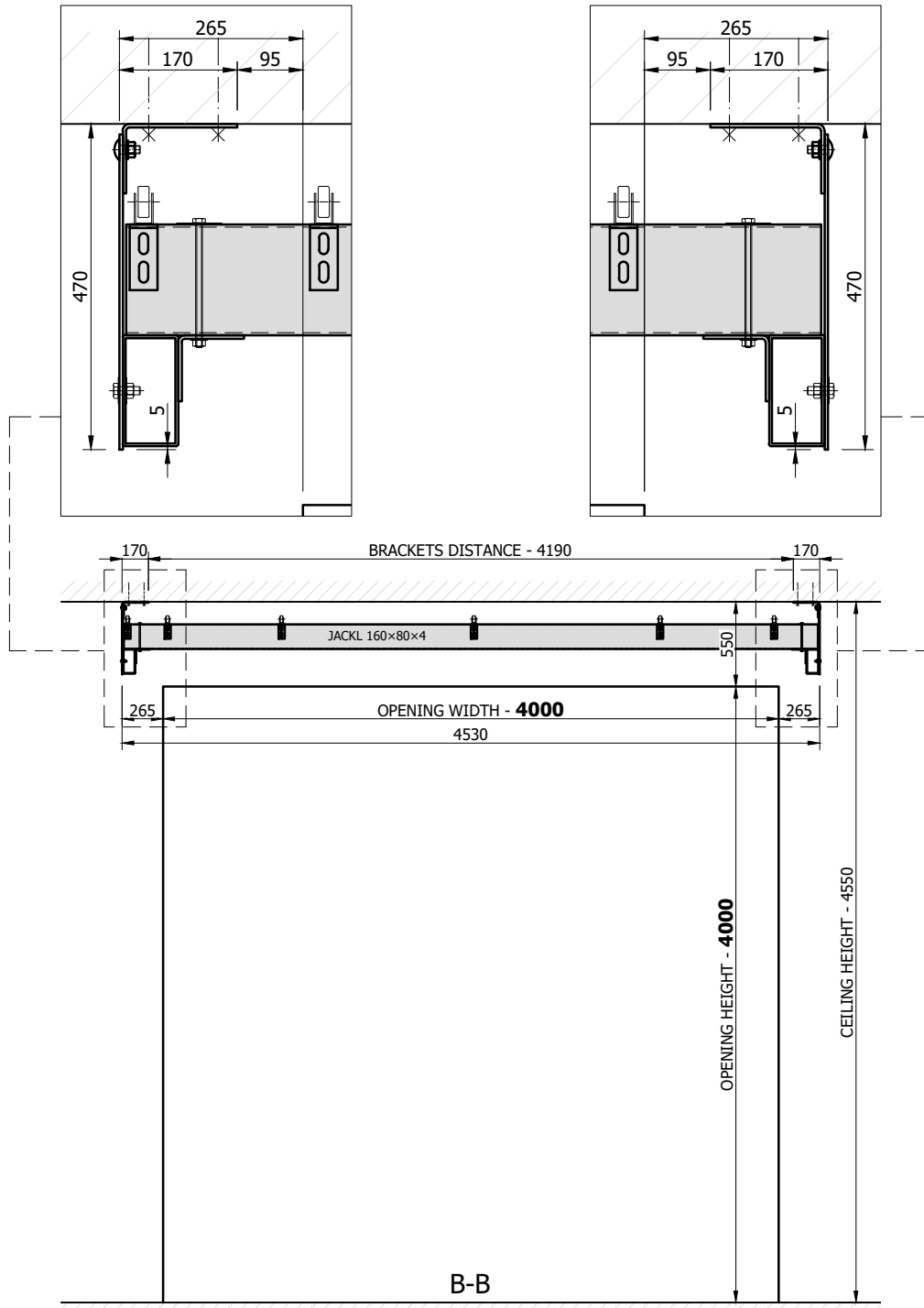

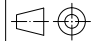


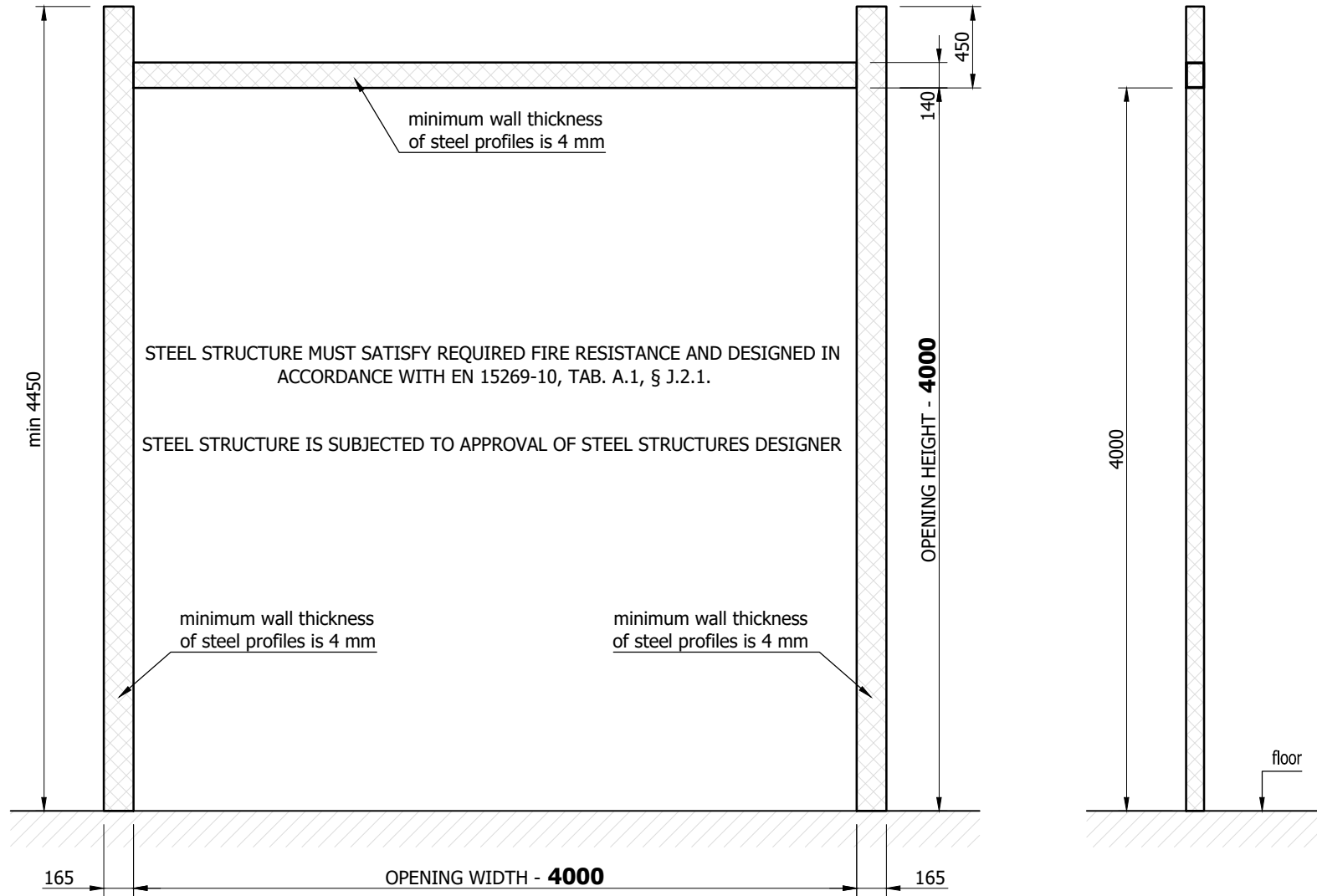
<b>SI 140.7-60,00</b>	
MAX. CYCLES/H	<b>7</b>
OPENING/CLOSING TIME	<b>50 s</b>
MOTOR UTILIZATION	<b>73 %</b>


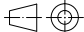
Top coat: **GALVANIZED**

SERIAL NR.	TYPE <b>RGS-120-H</b>	FIRE RESISTANCE <b>EI<sub>2</sub> 120-C</b>						
ORDER NR. <b>SE-3036</b>	PROJECT							
PRICE OFFER NR.	CUSTOMER T-CENTER							
ITEM <b>08</b>	DRAWING <b>01.00</b>	<b>RGS-120-H 4,00 × 4,00 m</b>						
DATE	DRAWN BY	GEOMETRICAL TOLERANCES	PROJECTION [ISO E]	SCALE	PCS	WEIGHT [kg]	MATERIAL SEMI PRODUCT	<b>BRANDPORTAR SWEDEN</b> Industrial Fire door Solutions
6.3.2023	PAVY	ISO 2768-mL		1:45 1:8	<b>1</b>	2270	---	



SERIAL NR.		TYPE <b>RGS-120-H</b>		FIRE RESISTANCE <b>EI<sub>2</sub> 120-C</b>				
ORDER NR. <b>SE-3036</b>		PROJECT						
PRICE OFFER NR.		CUSTOMER T-CENTER						
ITEM <b>08</b>	DRAWING <b>01.01</b>	<b>HORIZONTAL STEEL STRUCTURE</b>						
DATE	DRAWN BY	GEOMETRICAL TOLERANCES	PROJECTION [ISO E]	SCALE	PCS	WEIGHT [kg]	MATERIAL SEMI PRODUCT	 Industrial Firedoor Solutions
6.3.2023	PAVY	ISO 2768-mL		1:45 1:16, 1:10	-	---	---	



SERIAL NR.		TYPE <b>RGS-120-H</b>		FIRE RESISTANCE <b>EI<sub>2</sub> 120-C</b>				
ORDER NR. <b>SE-3036</b>		PROJECT						
PRICE OFFER NR.		CUSTOMER T-CENTER						
ITEM <b>08</b>	DRAWING <b>01.01</b>	<b>VERTICAL STEEL STRUCTURE (not part of the delivery)</b>						
DATE	DRAWN BY	GEOMETRICAL TOLERANCES	PROJECTION [ISO E]	SCALE	PCS	WEIGHT [kg]	MATERIAL SEMI PRODUCT	 <b>BRANDPORTAR SWEDEN</b> Industrial Firedoor Solutions
6.3.2023	PAVY	ISO 2768-mL		1:35	---	---	---	